

KEY FIGURES

200,000

individuals at risk of landslides/floods in camps (**25,000** at very high-risk).

883

community facilities are estimated to be at risk of landslides/floods.

18,885

refugees relocated from high-risk areas as part of risk mitigation effort.



The entire refugee population in camps (**724,837** refugees in Ukhia and **182,816** refugees in Teknaf) lack access to structures that are safe in high winds or cyclones.



1,500 additional acres of flat, usable, accessible land is needed to enable relocation of those most at-risk.

SITUATION OVERVIEW

With the cyclone and monsoon seasons ongoing, emergency preparedness remains the priority. The window for risk mitigation is all but closed. For the reporting period covering 22nd May – 30th May 2018, **503 people at risk** of landslides or floods have been relocated to safer areas and **6 weather related** incidents affected **661 people**. **500+ additional acres** of land, allocated by the Government of Bangladesh in March, are being prepared for more relocations of people at risk of landslide or flood. The lack of sufficient safe space for at-risk refugees, and the lack of safe shelters, limits risk mitigation possibilities. Discussions have begun with the RRRC to identify suitable evacuation sites for temporarily hosting large numbers of refugees.

Bangladesh: Official Critical Events Calendar (Source: BMD, BWDB, GoB)

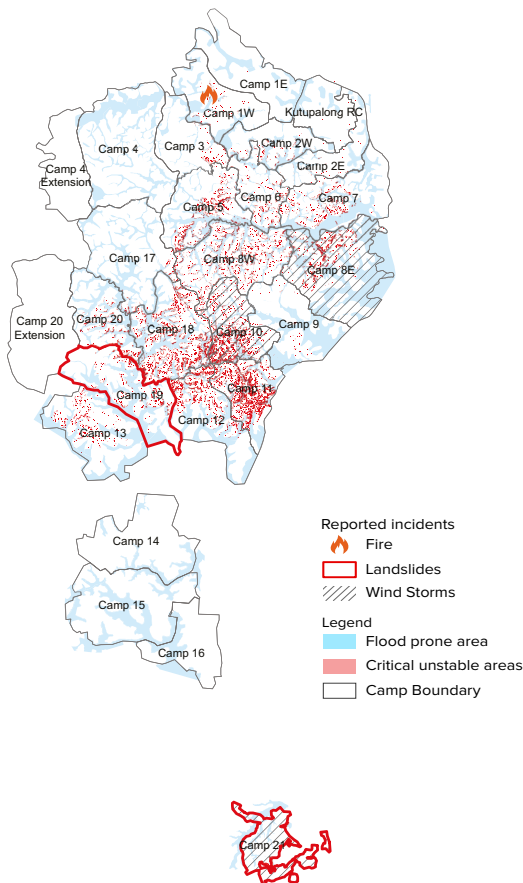
Critical events	May	June	July	August	Sept	Oct	Nov
Rain	■	■	■	■	■	■	■
Thunder Storm	■	■	■	■	■	■	■
Cyclone/Storm Surge	■	■	■	■	■	■	■

Expected Scenarios in Refugee Camps in Ukhia and Teknaf

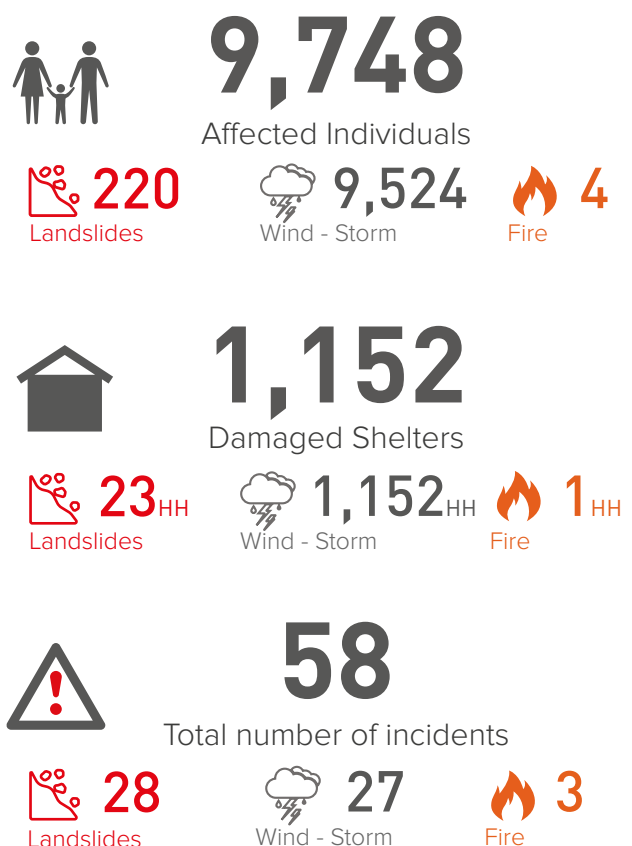
Landslides	■	■	■	■	■	■	■
Floods/Flash Floods	■	■	■	■	■	■	■

INCIDENT REPORTING

Incidents Reported in Camps (week of 22nd - 30th May 2018)



Cumulative Incidents Reported in Camps (since 27th May 2018)



OVERALL NEEDS, CHALLENGES AND GAPS



According to the Financial Tracking System (which reflects publicly reported contributions only), the Joint Response Plan (JRP) has received just **19 per cent** of the USD 951 million appeal as of 30th May 2018. Urgent funding needed for agencies to plan interventions, allocate resources and provide timely assistance.



Health: high risk of disease including water-borne diseases and mass landslide casualties.

Challenges: communicating medical needs, access for mobile medical teams, critical patient referral to health facilities.

Gaps: access to clean water; 24/7 health services in camp; coordination of ambulances for emergency referral.



In total, **19,491 Latrines de-sludged** (81% of target) and **3,185** decommissioned. This work continues.

Challenges: Flooding may cause latrine overflows.



170,938 Shelters have been upgraded with bamboo/tarps/rope/wire (**95%** of target). **39,618** tie-down kits have been installed (**22%** of target). Upgrades do not protect against high winds. Although tie-down kits increase wind resilience if properly installed.



Previous rains had no major impact on refugee **Food Security**; **13 cooked meal distribution points** operate now, with capacity to increase if needed. Reinforcement of food distribution points continues.



Access to the camps, particularly to the **Logistics Hub** in Madhu Chara and along the newly bricked roads within Kutupalong, needs to be managed to protect roads.



Trained camp-level **Protection Emergency Response Units**, including gender-based violence and child protection specialists, and **Emergency Protection Officers for Mobile Medical Teams** to identify/address/refer individual cases. Establishing meeting points for lost children/caregivers and info-points regarding missing persons.

Challenges: Some **100+** protection spaces could be affected by landslides and flooding. Major protection concerns expected to worsen particularly for women and children.

Awareness-raising activities for refugees on cyclone/monsoon risks include community radio programs in Rohingya (241 women in 17 sessions); Community Watch Group capacity-building (3 meetings); and an Emergency Response Team to share **early warning messages** ensuring the participation of women, girls, boys and men; and the integration of **gender perspectives** throughout the process.

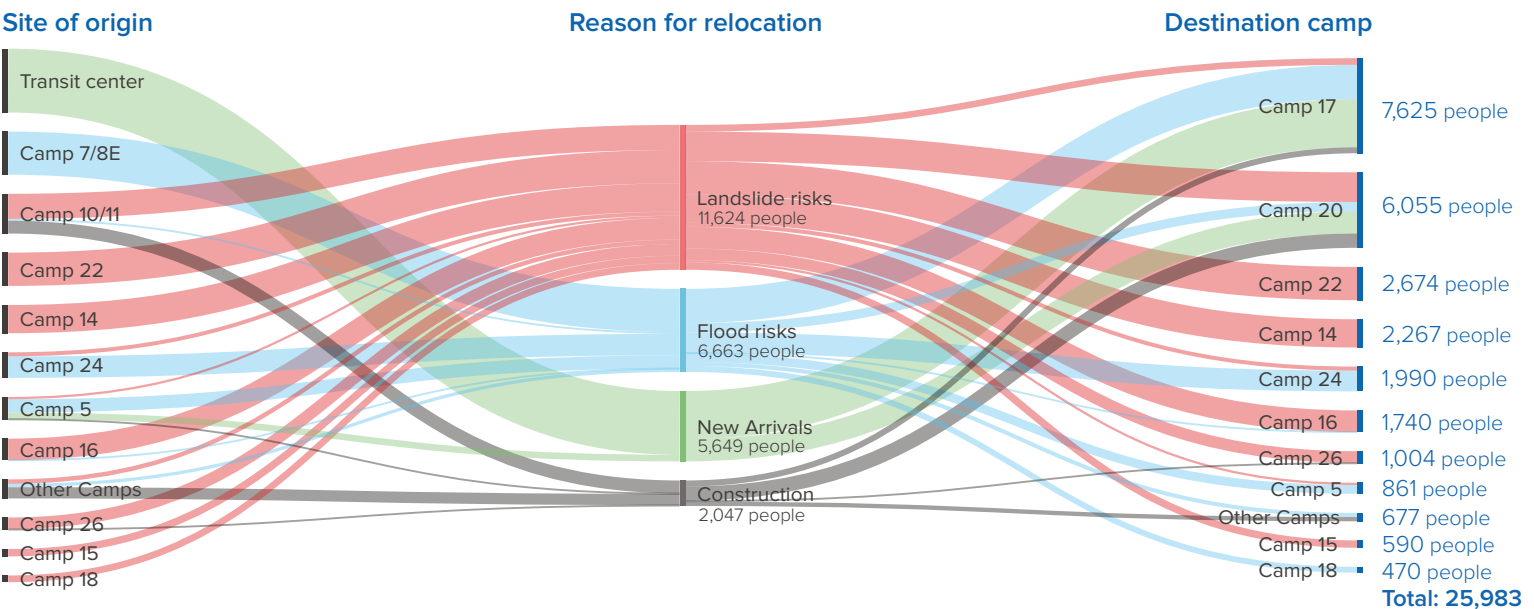
MITIGATION MEASURES FOR THE MOST VULNERABLE AND AT-RISK

In a race against time, earthworks are ongoing to make the land usable on **Camp 4 & Camp 20 extensions** (allocated by the Government since mid-March 2018). Space for approx. **12,250 refugees** is expected to be available in the coming month, subject to conducive conditions for completion of ongoing works.

Other mitigating measures include:

- Drainage excavation: planned 20km, **completed 16km**, rest of works are continuing
- Road: **Completed 19.5km** (LGED 11.79km and ADF 7.7KM), construction efforts continue
- Culvert: 7 pipe culverts and 2 box culverts installed along Army Road.
- Levelling, slope reinforcement, terracing etc.
- Communication with those at risk, demarcation of at-risk areas, relocation spaces etc.

RELOCATION SUMMARY (28 May 2018)



All data is provided by responsible Sectors and collated by the ISCG team in Cox's Bazar.